

## RFID has Arrived



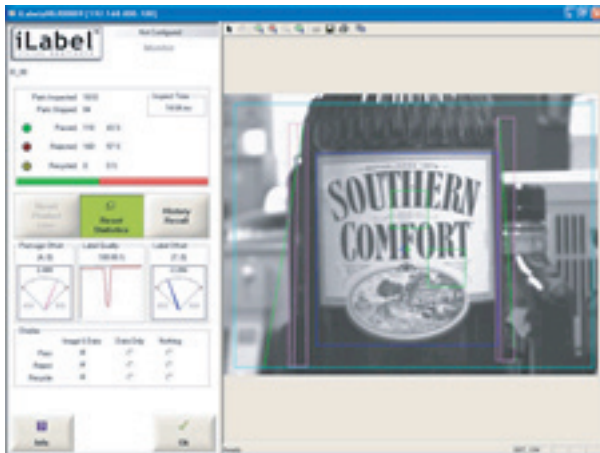
RFID Inc. is the oldest active RFID company in the world and is the preeminent source of RFID knowledge and expertise.

RFID Inc. offers tags in several shapes and sizes and in various frequencies and technologies to meet the needs of your specific application. RFID Inc. also offers custom tags specifically designed to meet your needs.

Readers and antennas are also available with several options and communication protocols such as RS 232/485, TTL, DeviceNet, ProfiBus, EtherNet and ModBus.

## Vision Made Easy

Vision applications have never been easier with IPD. Powerful solutions with easy-to-use interfaces that can be setup and deployed in a



matter of minutes. Available with a choice of hardware solutions, including number and resolution of sensors, these products truly make the benefits of machine vision available to all.

## Dynics/Ann Arbor Merge

"Our two companies are very complementary. Our product-based strategy offsets Dynics' custom project based business and our joint employee skill sets fill gaps in both organizations. The combined product and resource strength of the two companies paves the way for future growth."

- James Drenning, president of Ann Arbor Technologies

### Unhappy with your AB VersaView 1500 or Xycom 3115 systems?

The A2T-15 is a "drop-in" replacement for these systems. With dual ball-bearing fans and special CPU cooling, it solves the over-heating issues and hard drive failures of other systems. The A2T-15 comes standard with a NEMA 4X stainless steel bezel, Pentium 4 architecture and 2 PCI slots.

## Zero Pressure Accumulation



The ZoneControl™ Series from Sick is the Industry's First Complete Solution for ZPA Conveyor Applications. ZPA conveyors used in distribution warehouses, logistics centers and work-in-process operations are designed to accumulate and release product with zero forward pressure, resulting in a decreased risk of product damage or derailment. By using the complete solution, ZoneControl™ from SICK reduces costs while providing maximum usability.

- Modularity - Variety of mounting configurations.
- Flexibility - Easily change the conveyor functionality as needed.
- Reliability - Non-contact sensing devices for long life.
- Cost Reductions - Off-the-shelf bundled solutions reduce the number of components needed.



7105 CROSSROAD BLVD. • SUITE 104 • BRENTWOOD, TN 37027 • PH (615) 599-5080 • FAX (615) 599-5090

W E B W W W . C O R N E R S T O N E T E C H N I C A L . C O M